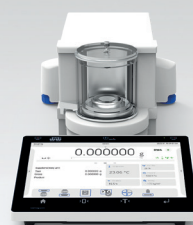
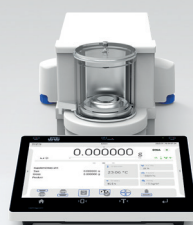




5Y Series Laboratory Balances

radwag.com





Ultra-microbalances

Ultra-microbalances
for filters

Microbalances

Microbalances
for pipettes calibration

UYA 5Y

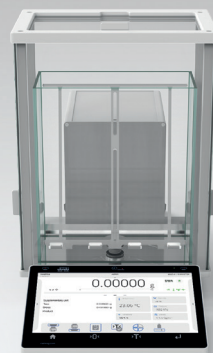
UYA 5Y.F

MYA 5Y

MYA 5Y.P

Maximum capacity [Max]	2.1 – 6.1 g	2.1	0.8 – 52 g	21 g
Readability [d]	0.1 µg	0.1 µg	1 – 10 µg	1 µg
Standard repeatability [5% Max]*	0.15 – 0.2 µg	0.15 µg	0.41 – 1.5 µg	1 µg
Stabilization time*	10 - 20 s	10 - 20 s	3.5 s	~ 5 s
Adjustment	Internal (automatic)	Internal (automatic)	Internal (automatic)	Internal (automatic)
Levelling system	Automatic – Reflex Level System	Automatic – Reflex Level System	Automatic – Reflex Level System	Automatic – Reflex Level System
Display	10" colour touchscreen	10" colour touchscreen	10" colour touchscreen	10" colour touchscreen
Weighing pan dimensions	ø16 mm	ø70 for filters + ø16 mm	ø16, ø26, ø40 mm	ø26 mm
Communication interfaces	USB-A x2, USB-C, HDMI, Ethernet, RS232, Wi-Fi ^{®**} , Hotspot	USB-A x2, USB-C, HDMI, Ethernet, RS232, Wi-Fi ^{®**} , Hotspot	USB-A x2, USB-C, HDMI, Ethernet, RS232, Wi-Fi ^{®**} , Hotspot	USB-A x2, USB-C, HDMI, Ethernet, RS232, Wi-Fi ^{®**} , Hotspot

*for moisture analyzers, the given values of other parameters **Wi-Fi[®] is a registered trademark of Wi-Fi Alliance[®].



Analytical Balances

Analytical Balances

Analytical Balances

Analytical Balances

XA 5Y.A

XA 5Y

XA 5Y.F

AS 5Y

Maximum capacity [Max]	41 – 520 g	52 – 520 g	52 – 110 g	60 – 3100 g
Readability [d]	0.002 – 0.1 mg	0.01 – 0.1 mg	0.01 mg	0.01 – 1 mg
Standard repeatability [5% Max]*	0.005 – 0.07 mg	0.005 – 0.07 mg	0.007 mg	0.01 – 0.5 mg
Stabilization time*	1.3 – 4 s	1.3 – 4 s	5 s (30 s for filters)	2 – 3 s
Adjustment	Internal (automatic)	Internal (automatic)	Internal (automatic)	Internal (automatic)
Levelling system	Automatic – Reflex Level System	Semi-automatic LevelSENSING	Semi-automatic LevelSENSING	Semi-automatic LevelSENSING
Display	10" colour touchscreen	10" colour touchscreen	10" colour touchscreen	10" colour touchscreen
Weighing pan dimensions	ø64, ø90, ø90, ø100, ø85 (option) mm	ø90, ø100, ø85 (option) mm	ø90, ø85 (option), 210x254 mm for filters	ø90, ø100, ø85 (option) mm
Communication interfaces	USB-A x2, USB-C, HDMI, Ethernet, RS232, Wi-Fi ^{®**} , Hotspot	USB-A x2, USB-C, HDMI, Ethernet, RS232, Wi-Fi ^{®**} , Hotspot	USB-A x2, USB-C, HDMI, Ethernet, RS232, Wi-Fi ^{®**} , Hotspot	USB-A x2, USB-C, HDMI, Ethernet, RS232, Wi-Fi ^{®**} , Hotspot

*for moisture analyzers, the given values of other parameters **Wi-Fi[®] is a registered trademark of Wi-Fi Alliance[®] ***Moisture content readability



Microbalances for filters	Microbalances	Microbalances	Microbalances for pipettes calibration	Microbalances for stents
MYA 5Y.F	XA 5Y.M.A	XA 5Y.M	XA 5Y.M.A.P	XA 5Y.M.A.S
5.1 g	6 – 53 g	6 – 53 g	6 – 53 g	6.1 g
1 µg	1 – 5 µg	1 – 5 µg	1 – 5 µg	1 µg
0.6 µg	0.8 – 2.2 µg	0.8 – 2.2 µg	0.8 – 2.2 µg	1.3 µg
max 8 s	~ 3.5 s	~ 3.5 s	~ 3.5 s	~ 3.5 s
Internal (automatic)	Internal (automatic)	Internal (automatic)	Internal (automatic)	Internal (automatic)
Automatic – Reflex Level System	Automatic – Reflex Level System	Semi-automatic LevelSENSING	Automatic – Reflex Level System	Automatic – Reflex Level System
10" colour touchscreen	10" colour touchscreen	10" colour touchscreen	10" colour touchscreen	10" colour touchscreen
ø70 for filters + ø16 mm ø160 for filters + ø26 mm	ø30 mm	ø30 mm	ø26 mm	ø30 mm + intended for stents
USB-A x2, USB-C, HDMI, Ethernet, RS232, Wi-Fi ^{®**} , Hotspot	USB-A x2, USB-C, HDMI, Ethernet, RS232, Wi-Fi ^{®**} , Hotspot	USB-A x2, USB-C, HDMI, Ethernet, RS232, Wi-Fi ^{®**} , Hotspot	USB-A x2, USB-C, HDMI, Ethernet, RS232, Wi-Fi ^{®**} , Hotspot	USB-A x2, USB-C, HDMI, Ethernet, RS232, Wi-Fi ^{®**} , Hotspot



Precision Balances	Precision Balances	Automatic devices for pipettes calibration	Microwave Moisture Analyzers	Moisture Analyzers
PS 5Y	5Y.PM	AP-12.5Y	PMV 5Y	MA 5Y
200 – 10100 g	10 – 120 kg	18 – 52 g	50 g	50 – 210 g
1 – 10 mg	0.01 – 0.2 g	1 – 10 µg	0.1 mg	0.1 – 1 mg
0.5 – 5 mg	0.004 – 0.082 g	2.8 – 5 µg	MCR: 0.0001 % ^{***}	MCR: 0.001 – 0.0001 % ^{***}
1.5 – 3 s	1 s	4 – max 10 s	Heating power: 800 W	Drying temp. max 160 °C, 250 °C
Internal (automatic)	Internal (automatic)	Internal (automatic)	External	Internal, external
Semi-automatic LevelSENSING	Semi-automatic LevelSENSING	Semi-automatic LevelSENSING	Semi-automatic LevelSENSING	Semi-automatic LevelSENSING
10" colour touchscreen	10" colour touchscreen	10" colour touchscreen	10" colour touchscreen	10" colour touchscreen
128x128, 195x195 mm	200x185, 350x260, 400x500 mm	intended + ø26 mm for calibration	Intended for glass fibre filter ø 90 mm	ø90 mm, h = 8 mm
USB-A x2, USB-C, HDMI, Ethernet, RS232, Wi-Fi ^{®**} , Hotspot	USB-A x2, USB-C, HDMI, Ethernet, RS232, Wi-Fi ^{®**} , Hotspot	USB-A x2, USB-C, HDMI, Ethernet, RS232, Wi-Fi ^{®**} , Hotspot	USB-A x2, USB-C, HDMI, Ethernet, RS232, Wi-Fi ^{®**} , Hotspot	USB-A x2, USB-C, HDMI, Ethernet, RS232, Wi-Fi ^{®**} , Hotspot

Light Display Mode

Fully secure login system
(face recognition camera)

Touch-free operation
(IR sensor)

16 working modes

Clear weighing result

Always visible
necessary statuses

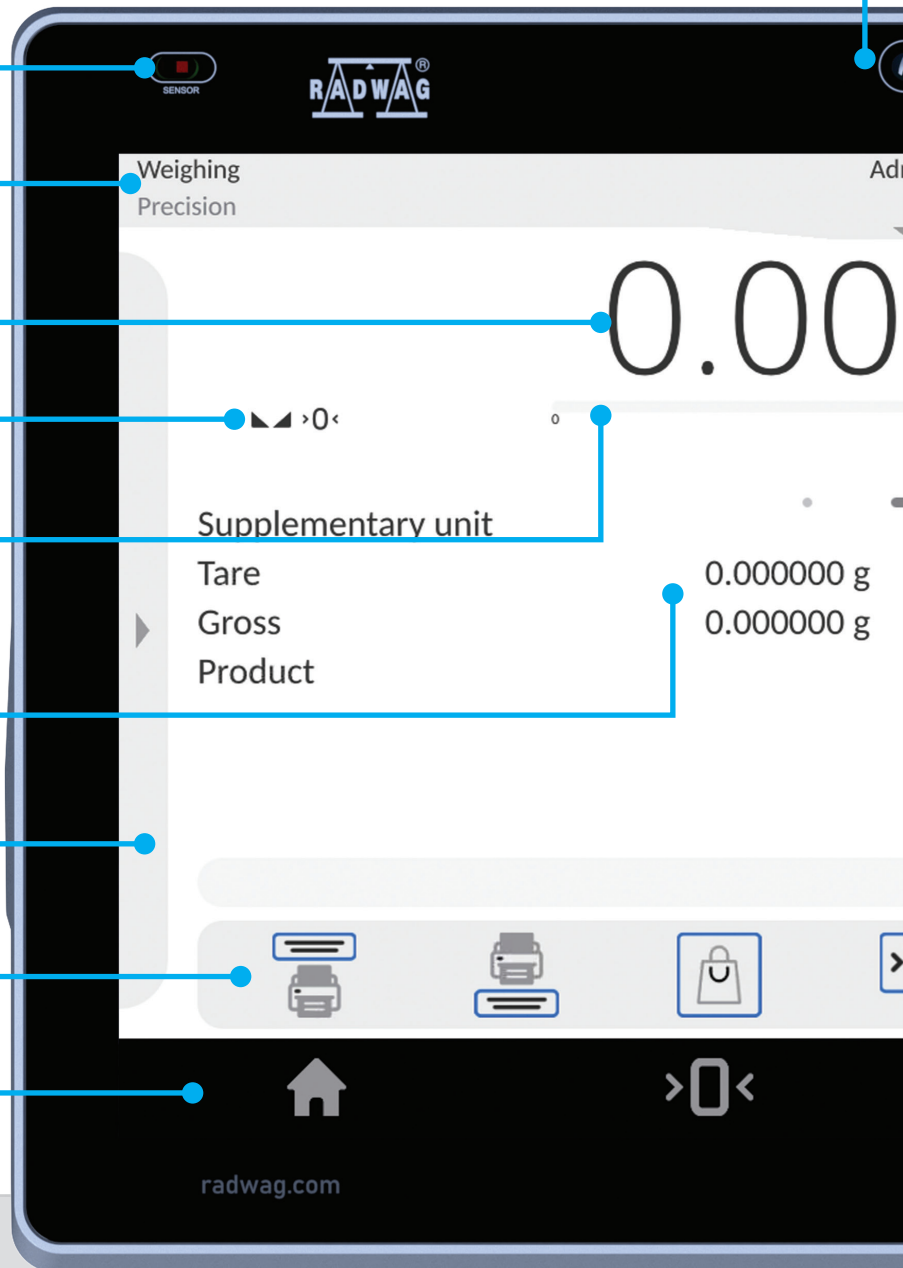
Always visible
necessary statuses

Customized data

Slide-out quick
access panel

Quick access
to commands

Main function bar



Ambient light

A truly innovative way of communicating between the user and the balance – seamless, intelligent, and intuitive. With just one look, everything becomes instantly clear.



Dark Display Mode

User data

Touch-free operation (IR sensor)

Quick access panel

Date and time

Smart levelling control

Digital Weighing Auditor

Screen selection

Widgets

Handy library

It couldn't be easier: the backlight colour informs you about status, process results, procedures, or alerts.



Discover the 5Y Series Laboratory Balances

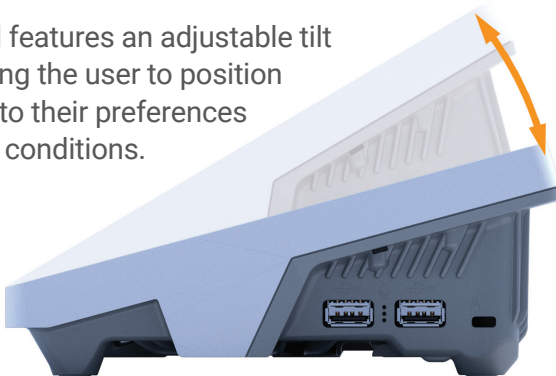
Tool-free disassembly of the weighing chamber

Contaminated weighing chamber? You don't need any tools to disassemble and clean the 5Y weighing chamber.



Terminal tilt adjustment

The terminal features an adjustable tilt angle, allowing the user to position it according to their preferences and working conditions.



Large chamber

Work with different labware in a chamber space of 200×170×220 mm.

Ionizer

Do you have an electrostatic sample that cannot be weighed?
The ionizer will neutralize its electrostatic charge.

Measurements Available on the computer

Available interfaces: 2 x USB-A, USB-C (Free Link), Ethernet, Wi-Fi®, Hotspot.

Voice commands

A set of actions ready to be performed
upon detecting a voice command.

Ambient light

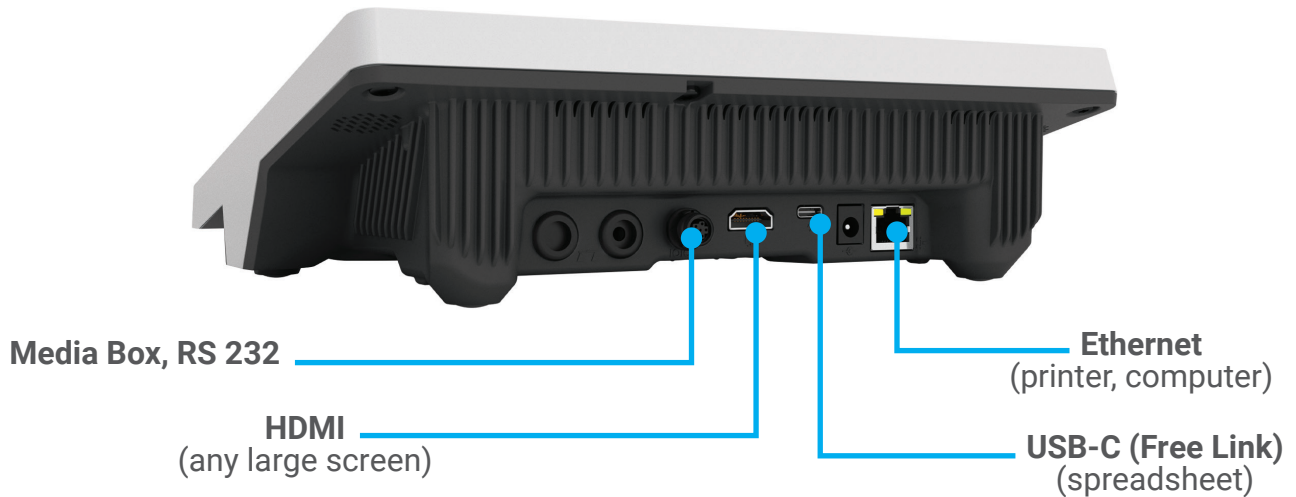
It couldn't be easier: the backlight colour
informs you about status, process
results, procedures, or alerts.

Kensington lock

The Kensington lock provides protection against unwanted relocation
of the balance, allowing it to be physically secured to another workstation.



Connecting 5Y



Audited Login Methods

Password

The 5Y offers password-based login, providing a basic level of protection and ensuring that only authorized personnel can access the device.

Fingerprint

Access to the 5Y can also be granted via fingerprint login, enhancing security and eliminating the need for manual password entry. This method allows for quick and effortless operation.



Facial recognition

Facial recognition is another convenient authentication option available on the 5Y, increasing both security and ease of use by allowing users to log in instantly with just a glance.

RFID

The 5Y works with RFID tags, which can be used to label products or formulation ingredients in the database. They can also serve as a means of user identification.

Hotspot
(smartphone, tablet)



Wi-Fi®
(printer, computer)



USB-A (RS 232 via converter)
(printer, computer, barcode scanner)



Hotspot



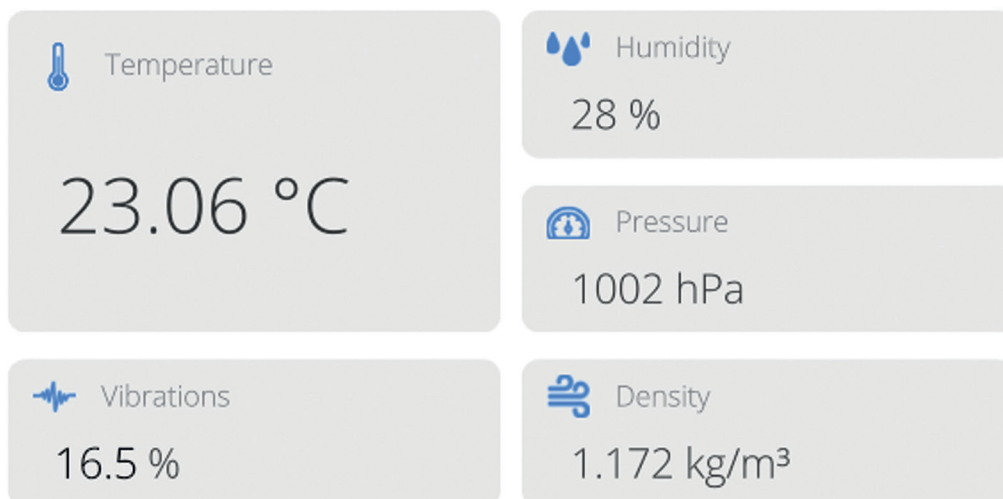
Remote balance operation

Thanks to the hotspot, you can operate the balance on any device previously connected to it. This can be a smartphone, tablet, or computer.



Widgets

Always at hand, grouped so that the essentials never slip away. 5Y monitors temperature, humidity, pressure, and vibration. The results are displayed as graphs or a widget on the home screen. Unsuitable conditions for the balance are signalled by DWA. And all of this is recorded in a dedicated database.



Up-to-date information on ambient conditions



Real-time Statistics from a Series of Measurements





Digital weighing auditor

DWA is a system that monitors ambient conditions (temperature, humidity, pressure, and vibration), balance levelling, adjustment, USP compliance, and ionizer operation. It enables air buoyancy compensation in real-time. What is more, it signals the need for a balance inspection or a periodic audit of the balance's accuracy and sensitivity. 5Y signals the results of the digital audit via Ambient Light, pictograms on the home screen, or a speaker.



Quickly accessible list of measurements

5Y always displays the history of the last 20 measurements on the slide-out panel. It is also here where the measurement series ready for e-signature, in accordance with 21 CFR Part 11, can be found.



Notes

One of 5Y's innovative features is the ability to add a note to a series of measurements or a procedure report, allowing users to document important observations, contextual information, or deviations directly within the measurement process.

Working Modes



Weighing

Basic working mode that displays the mass of a sample.



Parts counting

Quick counting of samples of similar mass.



Checkweighing

Control of sample mass in the set min/max thresholds.



Dosing

Weighing to a target value.



Percent weighing

Percent mass control.



Density

Determining the density of solids and liquids.



Animal weighing

Control of mass change over a set period of time.



formulations

Weighing of predefined ingredients, according to the order described in the formulation.



Statistics

Real-time statistics determined from carried out weighings.



Pipette calibration

Checking piston pipettes according to customer-specific requirements or ISO 8655.



Differential weighing

Analysing the change in mass of a single sample over time.



SQC

Statistical mass control with set thresholds.



Peak hold

Control of the maximum mass on the pan.



Mass control

Statistical control of samples of similar mass.



Comparator

Control of mass standards.



PGC

Statistical mass measurement in accordance with Packaged Goods Control.

Graphical Representation of Measurements

The balance gives you this possibility. You can choose between graphs of measurement series, ambient conditions, SQC with thresholds, and Gaussian distribution.



Weighing graph



Ambient conditions graph



Vibration graph



SQC graph



Gaussian distribution graph

Databases

- Weighing records
- Profiles
- Products
- Formulation reports
- ALIBI Memory
- Customers
- Pipettes
- Pipette calibration reports
- Formulations
- Warehouses
- Operators
- Universal variables
- Printouts
- Weight adjustment reports
- Ambient conditions
- SQC statistics
- Control reports
- Density reports
- Minimum weights
- Average tares
- Comparison reports
- Series
- Mass controls
- E-signed documents (CFR 21 Part 11)

Documentation

- Declaration of conformity
- Calibration certificate
- IQ, OQ, PQ documents
- 21 CFR Part 11 qualification
- USP compliance qualification
- Compliance with the latest version of the Pharmacopoeia



21 CFR Part 11, EU GMP Annex 11

Full data security

Validations

Electronic signatures

Electronic records

Audit trails



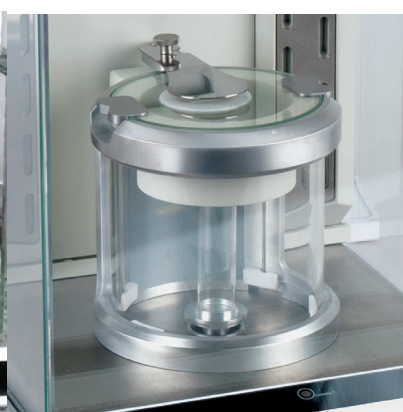
- Password strength settings
- Maximum number of incorrect login attempts
- Auto-logout of inactive user
- Permissions for non-logged-in users
- Permissions for electronic signature
- Permissions for databases management
- Creating database backup
- Adding respectively secured users
- Adding and editing databases according to permissions granted
- Replacing paper documents with digital ones

- Highest level of report security
- Separate database with saved reports
- Signature information
- Validation of the electronically signed report
- Comments on the report
- Three validation levels
- Automatic recording of changes in databases
- Audit trail preview
- Export of audit trail data

Do you work in the pharmaceutical industry? Do you need a digital signature?
We are offering the laboratory balance which as a standalone fully meets the requirements of 21 CFR Part 11 / EU GMP Annex 11.

Applications

If you use labware, weigh stents or filters, or want to check your pipette, use the 5Y accessories available:



Microscale glassware

Stents

Pipette calibration
adapters

Filters

Model	Product code	Maximum capacity [Max]	Readability [d]	Standard Repeatability [5% Max]	Stabilization time
ULTRA-MICROBALANCES UYA 5Y					
UYA 2.5Y	WL-109-0001	2.1 g	0.1 µg	0.15 µg	10-20 s
UYA 6.5Y	WL-109-0002	6.1 g	0.1 µg	0.2 µg	10-20 s
ULTRA-MICROBALANCES FOR FILTERS UYA 5Y.F					
UYA 2.5Y.F	WL-109-0003	2.1 g	0.1 µg	0.15 µg	10-20 s
MICROBALANCES MYA 5Y					
MYA 0.8/3.5Y	WL-109-1000	0.8/3 g	1/10 µg	0.6 µg	3.5 s
MYA 2.5Y	WL-109-0004	2.1 g	1 µg	0.41 µg	3.5 s
MYA 5.5Y	WL-109-0006	5.1 g	1 µg	0.6 µg	3.5 s
MYA 6.5Y	WL-109-0007	6 g	1 µg	0.6 µg	3.5 s
MYA 11.5Y	WL-109-0008	11 g	1 µg	0.9 µg	3.5 s
MYA 11.1.5Y	WL-109-0051	11 g	1 µg	0.45 µg	3.5 s
MYA 11/52.5Y	WL-109-1001	11/52 g	1/10 µg	1.5 µg	3.5 s
MYA 21.5Y	WL-109-0010	21 g	1 µg	1 µg	3.5 s
MYA 21/52.5Y	WL-109-1002	21/52 g	1/10 µg	1.5 µg	3.5 s
MYA 31.5Y	WL-109-0011	31 g	1 µg	1.2 µg	3.5 s
MICROBALANCES FOR PIPETTES CALIBRATION MYA 5Y.P					
MYA 21.5Y.P	WL-109-0023	21 g	1 µg	1 µg	~ 5 s
MICROBALANCES FOR FILTERS MYA 5Y.F					
MYA 5.5Y.F.A	WL-109-0024	5.1 g	1 µg	0.6 µg	max 8 s
MYA 5.5Y.F1	WL-109-0025	5.1 g	1 µg	0.6 µg	max 8 s
MICROBALANCES WITH AUTOMATICALLY OPENED WEIGHING CHAMBER XA 5Y.M.A					
XA 6.5Y.M.A	WL-109-0013	6.1 g	1 µg	0.8 µg	~ 3.5 s
XA 6/21.5Y.M.A	WL-109-1003	6/21 g	1/2 µg	1.3 µg	~ 3.5 s
XA 21.5Y.M.A	WL-109-0015	21 g	1 µg	1.3 µg	~ 3.5 s
XA 21/52.5Y.M.A	WL-109-1004	21/52 g	1/5 µg	1.5 µg	~ 3.5 s
XA 52.5Y.M.A	WL-109-0017	52 g	5 µg	2.2 µg	~ 3.5 s
XA 53.5Y.M.A	WL-109-0018	53 g	1 µg	1.5 µg	~ 3.5 s
MICROBALANCES FOR PIPETTES CALIBRATION XA 5Y.M.A.P					
XA 6/21.5Y.M.A.P	WL-112-1000	6/21 g	1/2 µg	1.3 µg	~ 3.5 s
XA 21/52.5Y.M.A.P	WL-112-1001	21/52 g	1/5 µg	1.5 µg	~ 3.5 s
XA 21.5Y.M.A.P	WL-112-0001	21 g	1 µg	1.3 µg	~ 3.5 s
XA 52.5Y.M.A.P	WL-112-0002	52 g	5 µg	2.2 µg	~ 3.5 s
XA 53.5Y.M.A.P	WL-112-0003	53 g	1 µg	1.5 µg	~ 3.5 s

Weighing pan dimensions	Adjustment	Display	Communication interfaces
ø16 mm	internal (automatic)	10" colour touchscreen	2xUSB-A, USB-C, HDMI, Ethernet, RS232 Wi-Fi®, Hotspot
ø16 mm	internal (automatic)	10" colour touchscreen	2xUSB-A, USB-C, HDMI, Ethernet, RS232 Wi-Fi®, Hotspot
ø70 + ø16 mm	internal (automatic)	10" colour touchscreen	2xUSB-A, USB-C, HDMI, Ethernet, RS232 Wi-Fi®, Hotspot
ø16 + ø60 mm	internal (automatic)	10" colour touchscreen	2xUSB-A, USB-C, HDMI, Ethernet, RS232 Wi-Fi®, Hotspot
ø16 mm	internal (automatic)	10" colour touchscreen	2xUSB-A, USB-C, HDMI, Ethernet, RS232 Wi-Fi®, Hotspot
ø26 mm	internal (automatic)	10" colour touchscreen	2xUSB-A, USB-C, HDMI, Ethernet, RS232 Wi-Fi®, Hotspot
ø26 mm	internal (automatic)	10" colour touchscreen	2xUSB-A, USB-C, HDMI, Ethernet, RS232 Wi-Fi®, Hotspot
ø26 mm	internal (automatic)	10" colour touchscreen	2xUSB-A, USB-C, HDMI, Ethernet, RS232 Wi-Fi®, Hotspot
ø16 mm	internal (automatic)	10" colour touchscreen	2xUSB-A, USB-C, HDMI, Ethernet, RS232 Wi-Fi®, Hotspot
ø26 + ø40 mm	internal (automatic)	10" colour touchscreen	2xUSB-A, USB-C, HDMI, Ethernet, RS232 Wi-Fi®, Hotspot
ø26 mm	internal (automatic)	10" colour touchscreen	2xUSB-A, USB-C, HDMI, Ethernet, RS232 Wi-Fi®, Hotspot
ø26 + ø40 mm	internal (automatic)	10" colour touchscreen	2xUSB-A, USB-C, HDMI, Ethernet, RS232 Wi-Fi®, Hotspot
ø26 mm	internal (automatic)	10" colour touchscreen	2xUSB-A, USB-C, HDMI, Ethernet, RS232 Wi-Fi®, Hotspot
ø26 mm	internal (automatic)	10" colour touchscreen	2xUSB-A, USB-C, HDMI, Ethernet, RS232 Wi-Fi®, Hotspot
ø70 + ø16 mm	internal (automatic)	10" colour touchscreen	2xUSB-A, USB-C, HDMI, Ethernet, RS232 Wi-Fi®, Hotspot
ø160 + ø26 mm	internal (automatic)	10" colour touchscreen	2xUSB-A, USB-C, HDMI, Ethernet, RS232 Wi-Fi®, Hotspot
ø30 mm	internal (automatic)	10" colour touchscreen	2xUSB-A, USB-C, HDMI, Ethernet, RS232 Wi-Fi®, Hotspot
ø30 mm	internal (automatic)	10" colour touchscreen	2xUSB-A, USB-C, HDMI, Ethernet, RS232 Wi-Fi®, Hotspot
ø30 mm	internal (automatic)	10" colour touchscreen	2xUSB-A, USB-C, HDMI, Ethernet, RS232 Wi-Fi®, Hotspot
ø30 mm	internal (automatic)	10" colour touchscreen	2xUSB-A, USB-C, HDMI, Ethernet, RS232 Wi-Fi®, Hotspot
ø30 mm	internal (automatic)	10" colour touchscreen	2xUSB-A, USB-C, HDMI, Ethernet, RS232 Wi-Fi®, Hotspot
ø30 mm	internal (automatic)	10" colour touchscreen	2xUSB-A, USB-C, HDMI, Ethernet, RS232 Wi-Fi®, Hotspot
ø26 mm	internal (automatic)	10" colour touchscreen	2xUSB-A, USB-C, HDMI, Ethernet, RS232 Wi-Fi®, Hotspot
ø26 mm	internal (automatic)	10" colour touchscreen	2xUSB-A, USB-C, HDMI, Ethernet, RS232 Wi-Fi®, Hotspot
ø26 mm	internal (automatic)	10" colour touchscreen	2xUSB-A, USB-C, HDMI, Ethernet, RS232 Wi-Fi®, Hotspot
ø26 mm	internal (automatic)	10" colour touchscreen	2xUSB-A, USB-C, HDMI, Ethernet, RS232 Wi-Fi®, Hotspot
ø26 mm	internal (automatic)	10" colour touchscreen	2xUSB-A, USB-C, HDMI, Ethernet, RS232 Wi-Fi®, Hotspot

Model	Product code	Maximum capacity [Max]	Readability [d]	Standard Repeatability [5% Max]	Stabilization time
MICROBALANCES FOR STENTS WEIGHING XA 5Y.M.A.S					
XA 6.5Y.M.A.S	WL-109-0026	6.1 g	1 µg	1.3 µg	~3.5 s
MICROBALANCES WITH MANUALLY OPENED WEIGHING CHAMBERN XA 5Y.M					
XA 6.5Y.M	WL-109-0019	6.1 g	1 µg	0.8 µg	~3.5 s
XA 6/21.5Y.M	WL-109-1006	6/21 g	1/2 µg	1.3 µg	~3.5 s
XA 21/52.5Y.M	WL-109-1007	21/52 g	1/5 µg	1.5 µg	~3.5 s
XA 21.5Y.M	WL-109-0020	21 g	1 µg	1.3 µg	~3.5 s
XA 52.5Y.M	WL-109-0021	52 g	5 µg	2.2 µg	~3.5 s
XA 53.5Y.M	WL-109-0022	53 g	1 µg	1.5 µg	~3.5 s
ANALYTICAL BALANCES WITH AUTOMATICALLY OPENED WEIGHING CHAMBER XA 5Y.A					
XA 41/120.5Y.A	WL-110-0027	41/120 g	0.002/0.005 mg	0.004 mg	3.5 s
XA 52.5Y.A	WL-110-0001	52 g	0.01 mg	0.005 mg	4 s
XA 82/220.5Y.A	WL-110-0004	82/220 g	0.01/0.1 mg	0.005 mg	4 s
XA 110.5Y.A	WL-110-0002	110 g	0.01 mg	0.005 mg	4 s
XA 120/250.5Y.A	WL-110-1000	120/250 g	0.01/0.1 mg	0.005 mg	3 s
XA 121/220.5Y.A	WL-110-0026	121/220 g	0.005/0.01 mg	0.005 mg	2 s
XA 210.5Y.A	WL-110-0003	210 g	0.01 mg	0.005 mg	4 s
XA 220.5Y.A	WL-110-0006	220 g	0.1 mg	0.05 mg	1.3 s
XA 310.5Y.A	WL-110-0007	310 g	0.1 mg	0.05 mg	1.3 s
XA 320.5Y.A	WL-110-0023	320 g	0.05 mg	0.02 mg	1.3 s
XA 520.5Y.A	WL-110-0008	520 g	0.1 mg	0.07 mg	1.3 s
ANALYTICAL BALANCES WITH MANUALLY OPENED WEIGHING CHAMBER XA 5Y					
XA 52.5Y	WL-110-0009	52 g	0.01 mg	0.005 mg	4 s
XA 82/220.5Y	WL-110-1001	82/220 g	0.01/0.1 mg	0.005 mg	4 s
XA 110.5Y	WL-110-0010	110 g	0.01 mg	0.005 mg	4 s
XA 120/250.5Y	WL-110-1002	120/250 g	0.01/0.1 mg	0.005 mg	3 s
XA 210.5Y	WL-110-0011	210 g	0.01 mg	0.005 mg	4 s
XA 220.5Y	WL-110-0012	220 g	0.1 mg	0.05 mg	1.3 s
XA 310.5Y	WL-110-0013	310 g	0.1 mg	0.05 mg	1.3 s
XA 520.5Y	WL-110-0014	520 g	0.1 mg	0.07 mg	1.3 s
ANALYTICAL BALANCES FOR FILTERS XA 5Y.F					
XA 52.5Y.F	WL-110-0017	52 g	0.01 mg	0.007 mg	5 s (30 s for filters)
XA 110.5Y.F	WL-110-0018	110 g	0.01 mg	0.007 mg	5 s (30 s for filters)

Weighing pan dimensions	Adjustment	Display	Communication interfaces
ø30 mm + 2x intended for stents	internal (automatic)	10" colour touchscreen	2xUSB-A, USB-C, HDMI, Ethernet, RS232 Wi-Fi®, Hotspot
ø30 mm	internal (automatic)	10" colour touchscreen	2xUSB-A, USB-C, HDMI, Ethernet, RS232 Wi-Fi®, Hotspot
ø30 mm	internal (automatic)	10" colour touchscreen	2xUSB-A, USB-C, HDMI, Ethernet, RS232 Wi-Fi®, Hotspot
ø30 mm	internal (automatic)	10" colour touchscreen	2xUSB-A, USB-C, HDMI, Ethernet, RS232 Wi-Fi®, Hotspot
ø30 mm	internal (automatic)	10" colour touchscreen	2xUSB-A, USB-C, HDMI, Ethernet, RS232 Wi-Fi®, Hotspot
ø30 mm	internal (automatic)	10" colour touchscreen	2xUSB-A, USB-C, HDMI, Ethernet, RS232 Wi-Fi®, Hotspot
ø64 mm	internal (automatic)	10" colour touchscreen	2xUSB-A, USB-C, HDMI, Ethernet, RS232 Wi-Fi®, Hotspot
ø90 mm, ø85 mm (option)	internal (automatic)	10" colour touchscreen	2xUSB-A, USB-C, HDMI, Ethernet, RS232 Wi-Fi®, Hotspot
ø90 mm, ø85 mm (option)	internal (automatic)	10" colour touchscreen	2xUSB-A, USB-C, HDMI, Ethernet, RS232 Wi-Fi®, Hotspot
ø90 mm, ø85 mm (option)	internal (automatic)	10" colour touchscreen	2xUSB-A, USB-C, HDMI, Ethernet, RS232 Wi-Fi®, Hotspot
ø90 mm, ø85 mm (option)	internal (automatic)	10" colour touchscreen	2xUSB-A, USB-C, HDMI, Ethernet, RS232 Wi-Fi®, Hotspot
ø90 mm, ø85 mm (option)	internal (automatic)	10" colour touchscreen	2xUSB-A, USB-C, HDMI, Ethernet, RS232 Wi-Fi®, Hotspot
ø78 mm	internal (automatic)	10" colour touchscreen	2xUSB-A, USB-C, HDMI, Ethernet, RS232 Wi-Fi®, Hotspot
ø90 mm, ø85 mm (option)	internal (automatic)	10" colour touchscreen	2xUSB-A, USB-C, HDMI, Ethernet, RS232 Wi-Fi®, Hotspot
ø100 mm	internal (automatic)	10" colour touchscreen	2xUSB-A, USB-C, HDMI, Ethernet, RS232 Wi-Fi®, Hotspot
ø100 mm	internal (automatic)	10" colour touchscreen	2xUSB-A, USB-C, HDMI, Ethernet, RS232 Wi-Fi®, Hotspot
ø90 mm, ø85 mm (option)	internal (automatic)	10" colour touchscreen	2xUSB-A, USB-C, HDMI, Ethernet, RS232 Wi-Fi®, Hotspot
ø100 mm	internal (automatic)	10" colour touchscreen	2xUSB-A, USB-C, HDMI, Ethernet, RS232 Wi-Fi®, Hotspot
ø90 mm, ø85 mm (option)	internal (automatic)	10" colour touchscreen	2xUSB-A, USB-C, HDMI, Ethernet, RS232 Wi-Fi®, Hotspot
ø90 mm, ø85 mm (option)	internal (automatic)	10" colour touchscreen	2xUSB-A, USB-C, HDMI, Ethernet, RS232 Wi-Fi®, Hotspot
ø90 mm, ø85 mm (option)	internal (automatic)	10" colour touchscreen	2xUSB-A, USB-C, HDMI, Ethernet, RS232 Wi-Fi®, Hotspot
ø90 mm, ø85 mm (option)	internal (automatic)	10" colour touchscreen	2xUSB-A, USB-C, HDMI, Ethernet, RS232 Wi-Fi®, Hotspot
ø90 mm, ø85 mm (option)	internal (automatic)	10" colour touchscreen	2xUSB-A, USB-C, HDMI, Ethernet, RS232 Wi-Fi®, Hotspot
ø100 mm	internal (automatic)	10" colour touchscreen	2xUSB-A, USB-C, HDMI, Ethernet, RS232 Wi-Fi®, Hotspot
ø100 mm	internal (automatic)	10" colour touchscreen	2xUSB-A, USB-C, HDMI, Ethernet, RS232 Wi-Fi®, Hotspot
ø100 mm	internal (automatic)	10" colour touchscreen	2xUSB-A, USB-C, HDMI, Ethernet, RS232 Wi-Fi®, Hotspot
210x254 mm for filters, ø90 mm, ø85 mm (option)	internal (automatic)	10" colour touchscreen	2xUSB-A, USB-C, HDMI, Ethernet, RS232 Wi-Fi®, Hotspot
210x254 mm for filters, ø90 mm, ø85 mm (option)	internal (automatic)	10" colour touchscreen	2xUSB-A, USB-C, HDMI, Ethernet, RS232 Wi-Fi®, Hotspot

Model	Product code	Maximum capacity [Max]	Readability [d]	Standard Repeatability [5% Max]	Stabilization time
ANALYTICAL BALANCES AS 5Y					
AS 60/220.5Y	WL-104-0529	60/220 g	0.01 / 0.1 mg	0.01 mg	2 s
AS 62.5Y	WL-104-0530	62 g	0.01 mg	0.01 mg	3 s
AS 82/220.5Y	WL-104-0527	82/220 g	0.01/0.1 mg	0.01 mg	2 s
AS 120.5Y	WL-104-0528	120 g	0.01 mg	0.01 mg	2 s
AS 160.5Y	WL-104-0522	160 g	0.1 mg	0.06 mg	2 s
AS 220.5Y	WL-104-0523	220 g	0.1 mg	0.06 mg	2 s
AS 310.5Y	WL-104-0524	310 g	0.1 mg	0.07 mg	2.5 s
AS 520.5Y	WL-104-0526	520 g	0.1 mg	0.07 mg	2.5 s
AS 3100.5Y	WL-104-0525	3100 g	1 mg	0.5 mg	2 s
PRECISION BALANCES PS 5Y					
PS 200/2000.5Y	WL-220-0418	200/2000 g	1/10 mg	0.5/5 mg	2/1.5 s
PS 210.5Y	WL-220-0408	210 g	1 mg	0.5 mg	2 s
PS 360.5Y	WL-220-0412	360 g	1 mg	0.5 mg	2 s
PS 600.5Y	WL-220-0414	600 g	1 mg	0.5 mg	2 s
PS 750.5Y	WL-220-0416	750 g	1 mg	0.5 mg	2 s
PS 1000.5Y	WL-220-0406	1000 g	1 mg	0.5 mg	2 s
PS 2100.5Y.M	WL-220-0409	2100 g	10 mg	5 mg	1.5 s
PS 3000.5Y	WL-220-0410	3000 g	1 mg	0.6 mg	3 s
PS 3500.5Y.M	WL-220-0411	3500 g	10 mg	5 mg	1.5 s
PS 4500.5Y.M	WL-220-0413	4500 g	10 mg	5 mg	1.5 s
PS 6100.5Y.M	WL-220-0415	6100 g	10 mg	5 mg	1.5 s
PS 8100.5Y.M	WL-220-0417	8100 g	10 mg	5 mg	1.5 s
PS 10100.5Y.M	WL-220-0407	10100 g	10 mg	5 mg	1.5 s
PRECISION BALANCES 5Y.PM					
5Y.10.PM	WL-224-0001	10 kg	0.01 g	0.004 g	1 s
5Y.15.PM	WL-224-0002	15 kg	0.01 g	0.004 g	1 s
5Y.20.PM	WL-224-0003	20 kg	0.01 g	0.004 g	1 s
5Y.25.PM	WL-224-0004	25 kg	0.1 g	0.04 g	1 s
5Y.35.PM	WL-224-0005	35 kg	0.1 g	0.04 g	1 s
5Y.50.PM	WL-224-0006	50 kg	0.1 g	0.04 g	1 s
5Y.60.PM	WL-224-0007	60 kg	0.1 g	0.041 g	1 s
5Y.120.PM	WL-224-0009	120 kg	0.2 g	0.082 g	1 s

Model	Product code	Maximum capacity [Max]	Readability [d]	Moisture content readability	Drying temperature	Heating module
MOISTURE ANALYZERS PMV 5Y						
PMV 50.5Y	WL-307-0006	50 g	0.1 mg	0.0001 %	-	microwave radiation emitter
MOISTURE ANALYZERS WITH INTERNAL CALIBRATION MA 5Y.IC						
MA 50/1.5Y.IC	WL-304-0061	50 g	0.1 mg	0.0001 %	Max 160 °C	IR emitter
MA 50/1.5Y.IC.NS	WL-304-0062	50 g	0.1 mg	0.0001 %	Max 160 °C	steel heater
MA 50/1.5Y.IC.WH	WL-304-0063	50 g	0.1 mg	0.0001 %	Max 250 °C	halogen
MA 50.5Y.IC	WL-304-0058	50 g	1 mg	0.001 %	Max 160 °C	IR emitter
MA 50.5Y.IC.NS	WL-304-0059	50 g	1 mg	0.001 %	Max 160 °C	steel heater
MA 50.5Y.IC.WH	WL-304-0060	50 g	1 mg	0.001 %	Max 250 °C	halogen
MA 110.5Y.IC	WL-304-0049	110 g	1 mg	0.001 %	Max 160 °C	IR emitter
MA 110.5Y.IC.NS	WL-304-0050	110 g	1 mg	0.001 %	Max 160 °C	steel heater
MA 110.5Y.IC.WH	WL-304-0051	110 g	1 mg	0.001 %	Max 250 °C	halogen
MA 200/1.5Y.IC	WL-304-0052	200 g	0.1 mg	0.0001 %	Max 160 °C	IR emitter
MA 200/1.5Y.IC.NS	WL-304-0053	200 g	0.1 mg	0.0001 %	Max 160 °C	steel heater
MA 200/1.5Y.IC.WH	WL-304-0054	200 g	0.1 mg	0.0001 %	Max 250 °C	halogen
MA 210.5Y.IC	WL-304-0055	210 g	1 mg	0.001 %	Max 160 °C	IR emitter
MA 210.5Y.IC.NS	WL-304-0056	210 g	1 mg	0.001 %	Max 160 °C	steel heater
MA 210.5Y.IC.WH	WL-304-0057	210 g	1 mg	0.001 %	Max 250 °C	halogen
MOISTURE ANALYZERS WITH EXTERNAL CALIBRATION MA 5Y						
MA 50/1.5Y	WL-304-0046	50 g	0.1 mg	0.0001 %	Max 160 °C	IR emitter
MA 50/1.5Y.NS	WL-304-0047	50 g	0.1 mg	0.0001 %	Max 160 °C	metal heater
MA 50/1.5Y.WH	WL-304-0048	50 g	0.1 mg	0.0001 %	Max 250 °C	halogen
MA 50.5Y	WL-304-0043	50 g	1 mg	0.001 %	Max 160 °C	IR emitter
MA 50.5Y.NS	WL-304-0044	50 g	1 mg	0.001 %	Max 160 °C	metal heater
MA 50.5Y.WH	WL-304-0045	50 g	1 mg	0.001 %	Max 250 °C	halogen
MA 110.5Y	WL-304-0034	110 g	1 mg	0.001 %	Max 160 °C	IR emitter
MA 110.5Y.NS	WL-304-0035	110 g	1 mg	0.001 %	Max 160 °C	steel heater
MA 110.5Y.WH	WL-304-0036	110 g	1 mg	0.001 %	Max 250 °C	halogen
MA 200/1.5Y	WL-304-0037	200 g	0.1 mg	0.0001 %	Max 160 °C	IR emitter
MA 200/1.5Y.NS	WL-304-0038	200 g	0.1 mg	0.0001 %	Max 160 °C	steel heater
MA 200/1.5Y.WH	WL-304-0039	200 g	0.1 mg	0.0001 %	Max 250 °C	halogen
MA 210.5Y	WL-304-0040	210 g	1 mg	0.001 %	Max 160 °C	IR emitter
MA 210.5Y.NS	WL-304-0041	210 g	1 mg	0.001 %	Max 160 °C	steel heater
MA 210.5Y.WH	WL-304-0042	210 g	1 mg	0.001 %	Max 250 °C	halogen



Authorized Partner...

Limra Instruments

 G-8, Ground Floor Top Class Enclave CHS. Ltd.,
Opp Zudio Showroom, Bhoidapada, Sativali Road,
Vasai East, Dist. Palghar-401208, Maharashtra.

 info@limrainstruments.com,
sales@limrainstruments.com,

 www.limrainstruments.com

 Customer Care - 7666114785



Scan For Website

Your Limra Representative

